

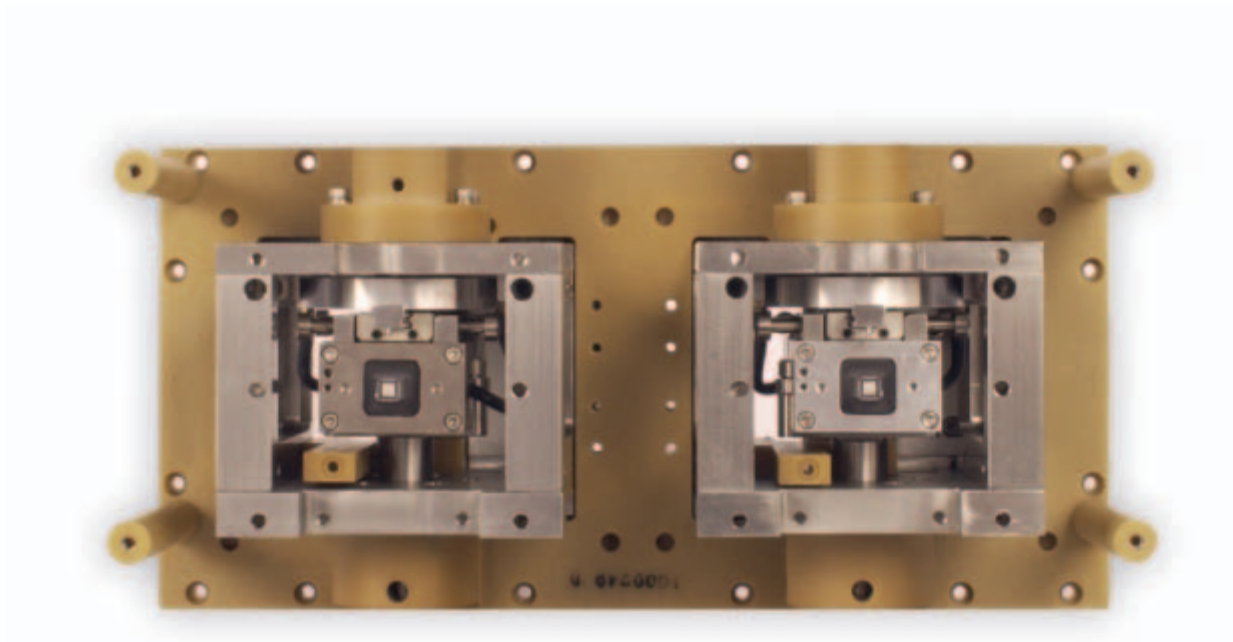
Model 55 V6 IC Test Handler



AETRIUM[®]

Experience, Technology, Solutions

Aetrium's Model 55V6 IC Test Handlers are ideally suited for high volume production handling of small devices using tube input and tube output media. The small footprint handler is capable of handling a wide variety of packages including SOIC, SSOP, TSOP, TSSOP, MSOP, QSOP, Chip Scale and many other new leadless QFN packages.



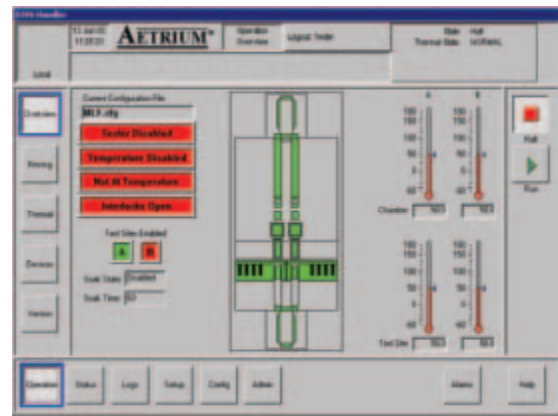
High speed rotating test sites

High Speed Indexing with Unique Test Site Actuator

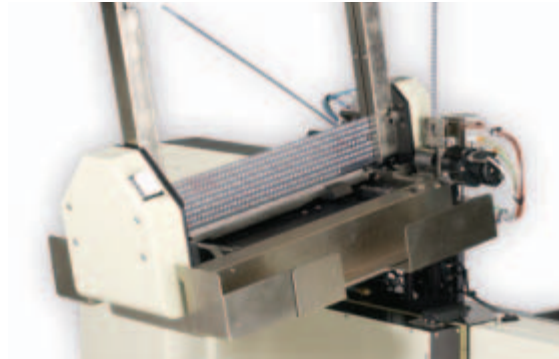
- 12,000 uph includes 350 ms of test time
- Effective uph at zero test time of 28,800
- Single, parallel, ping-pong or asynchronous operation

Flexible Configuration

- Small vertical footprint minimizes floor space
- Temperature
 - Ambient
 - Hot
 - Cold
- Handler can accommodate any size test head
- Test sites
 - Single
 - Dual
- Split device kits
- SEMI-compliant GUI
- Touch screen monitor
- Diagnostic help screen
- System setup screen
- Real time error logging



Diagnostic and Graphical User Interface



Input Tube Loader

Device Handling

- Horizontal input bulk tube load
- Vertical backplane simplifies docking process
- Adaptable to a complete spectrum of tests (RF, digital and analog)
- Contacting
 - Kelvin
 - Standard (Non-Kelvin)
 - Plunge-to-trace
 - Customer supplied
 - Third party
- Access portals for jam clearance
- Convenient output bulk tube unload
- Up to 4 programmable tube outputs per site



Vertical Backplane

Mechanical Refrigeration

- Refrigeration system is enclosed within the base cabinet
- Eliminates costly facility plumbing and the cost of LN2
- Eliminates floor space requirement for portable LN2 tanks



Integrated Mechanical Refrigeration

Specifications

Applications

Package Types	SOIC, SSOP, TSOP, TSSOP, MSOP, QSOP, MLF™, QFN, LPCC, Chip Scale and other packages
Package Sizes	3 mm to 10 mm - QFN 118 mm to 208 mm - SO
Test Sites	Single or dual
Package Conversion	4 to 8 hours typical

Environmental

Temperature Range	Ambient Ambient to +155°C Tri-temp -55°C to +155°C
Accuracy	±1°C at test site
Display	Test site and input reservoir temperature displayed on touch screen monitor
Sensors	T type thermocouple sensors at test sites and input reservoir
Heating	Chamber, with safety cutoff at 190°C
Soak Time	Operator selectable, 0 to 999 seconds

Contactors

Type	Kelvin Standard (Non-Kelvin) Plunge-to-trace Customer supplied Third party
------	--

Input/Output

Input	Up to 30-tube capacity – 3 mm x 3 mm
Output	Up to 30-tube capacity – 3 mm x 3 mm 4 manual programmable per test site
Throughput	12,000 uph @ 350 ms test time
Index Time	250 ms

Tester Interface

Digital Interface	IEEE-488 GPIB, parallel
Test Modes	Parallel Ping-pong (alternating) Asynchronous Single

Controls

Display	Touch screen monitor
Screen Setup	Thermal/calibration Binning Handler configuration Dynamic system alarm Diagnostics

Physical Dimensions

Weight	1200 lbs. (550 kg)
Height	80 inches (200 cm)
Footprint	46 inches (117 cm) x 36 inches (92 cm)

Utilities

Air Supply	80 PSIG dry filtered air, 14 SCFM
Electrical	230 Volts AC, single phase 50/60 Hz 1 Amp normal with 3 Amp surge 15 Amps at elevated temperature 30 Amps at tri-temp

Specifications subject to change without notice.



World Headquarters Aetrium Incorporated
2350 Helen Street
North St. Paul, MN 55109 USA
651-770-2000
Fax: 651-770-7975
www.aetrium.com
e-mail: info@aetrium.com