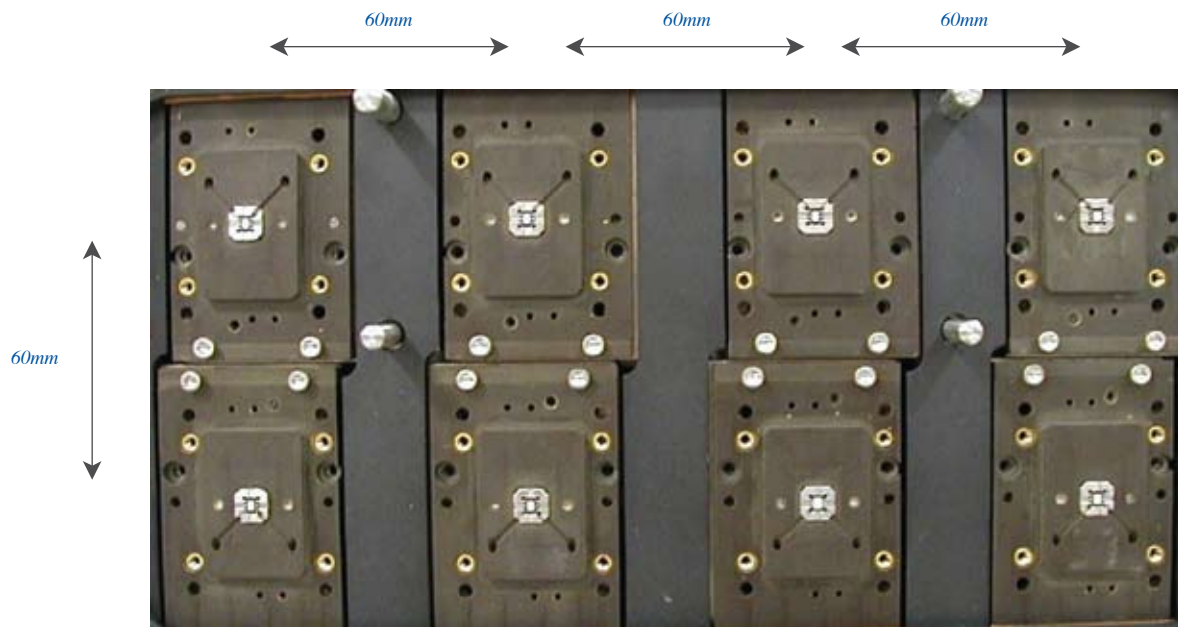


Model 55V16 IC Test Handler



AETRIUM[®]
Experience, Technology, Solutions

Aetrium's Model V16 IC Test Handlers are ideally suited for octal- or quad-site high-volume production handling of small devices using tube or magazine input and output media. The small footprint handler is capable of handling a wide variety of packages including SOIC, SSOP, TSOP, TSSOP, MSOP, QSOP, and many other new leadless QFN packages.



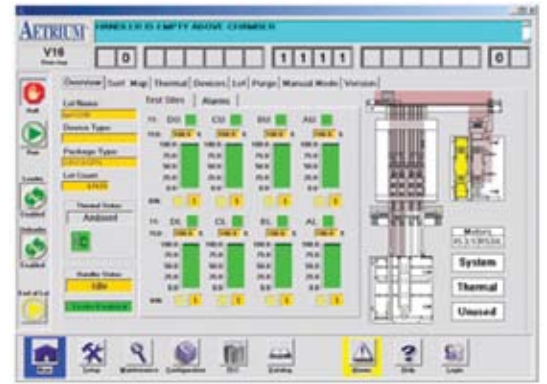
High speed rotating test site actuators (octal site configuration)

High Speed Indexing with Unique Rotating Test Site Actuators

- 29,000 uph (octal site) includes up to 900 ms of test time
- Dual, high-speed output sort shuttles
- 60mm x 60mm test site pitch

Flexible Configuration

- Test Sites
 - Octal
 - Quad
- Temperatures
 - Ambient
 - Ambient-Hot (Cold ready)
 - Tri-Temp (Ambient, Hot, and Cold)
- Input / Output Media
 - Tube
 - Metal magazine
- Any size test head
- SEMI-compliant GUI
- Touch-screen LCD monitore



Touchscreen LCD Graphical User Interface

Device Handling

- Dual soak tracks per test sits provide 2 minute soak time for most devices with no performance penalty
- Front-access Input Auto Loader
- Front-access Output Auto Unloader
- Contacting
 - Kelvin
 - Standard (non-Kelvin)
 - Plunge-to-trace
 - Customer supplied
 - Third party
- Tool-less access portals for jam clearance
- Up to 8 programmable tube or magazine outputs



Tube Loader



Tube Unloader

Mechanical Refrigeration

- No LN₂ tanks or plumbing required
- Detachable refrigeration unit supports multiple handlers



Detachable Mechanical Refrigeration

Model V16 Specifications

Applications

Package Types	QFN, SOIC, SSOP, TSSOP, MSOP, QSOP, BGA, CSP
Package Sizes	QFN 3mm to 10mm SO .118" to .208"
Leads	8 to 28 leads 0.025 inch to 0.050 inch pitch 0.5mm to 1.27mm pitch
Test Sites	Octal or Quad
Package Conversion	4 hours typical

Environmental

Temperature Range	Ambient Ambient- Hot: ambient 10 +155°C Tri-Temp: -55°C to +155°C
Accuracy	± 1°C at test site ± 3°C in chamber
Heating	Chamber, with safety cutoff at 190°C
Cooling	Detachable mechanical refrigeration
Soak Capacity	32 inch (81cm)

Contactors/Load Boards

Scket Type	Kelvin Standard (non-Kelvin) Plunge-to-trace Customer supplied Third party
Backplane	Vertical - 43.5 inches (1105mm) from centerline of bottom row to floor
Test Site Pitch	60mm x 60mm

Input/Output

Input	- Tubes Auto Loader: up to 80 tubes - Magazine Auto Loader: up to 30 magazines
Output	- Tube Auto Unloader: up to 160 tubes (4 stacks of 7" each (178mm)) - Magazine Auto Unloader: up to 33 magazines - up to 8 programmable manual tube/magazine output bins per pair of test sites
Throughput	29,000 uph @ 900ms test time (octal-site)
Index Time	350ms (EOT to SOT)

Tester Interface

Digital Interface	IEEE-488 GPIB, Parallel, RS-232 serial
Test Modes	Parallel/synchronous Asynchronous

Controls

Display	Touch screen 15" LCD monitor
---------	------------------------------

Physical Dimensions

Weight	1350 lbs. (615kg)
Height	78 inches (1980mm)
Footprint	40.5" (1030mm) x 38" inches (970mm)

Utilities

Air Supply	80 PSIG dry filtered air, 20 SCFM
Electrical	230 Volts AC, single phase 50/60 Hz 1 Amp normal with 3 Amp surge 15 Amps at elevated temperature 30 Amps at tri-temp

All specifications subject to change without notice.



Aetrium incorporated
2350 helen Street
North St. Paul, MN 55109 USA
(651) 770-7975
www.Aetrium.com
email: info@aetrium.com

V16/01 ©2008 Aetrium, Inc. All Rights Reserved