

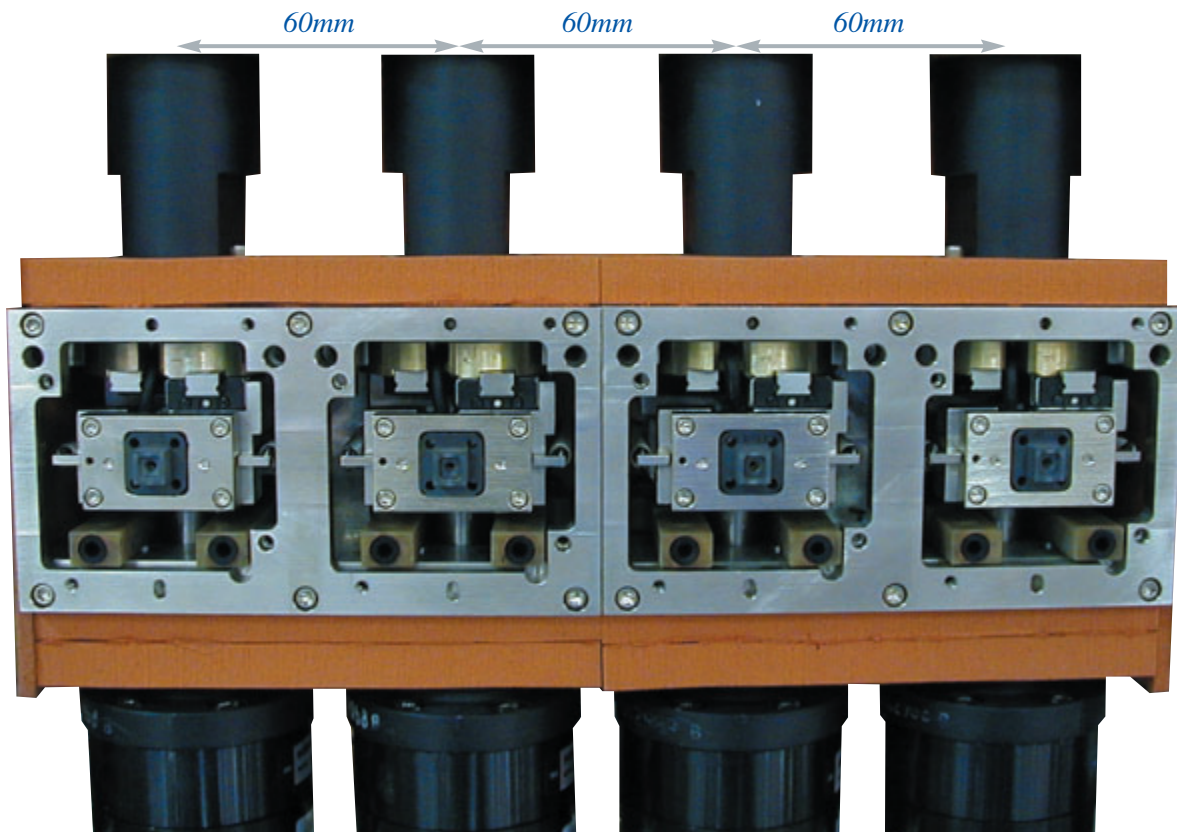
Model V8 IC Test Handler



AETRIUM[®]

Experience, Technology, Solutions

Aetrium's Model V8 IC Test Handlers are ideally suited for quad- or dual-site high-volume production handling of small devices using tube or magazine input and output media. The small footprint handler is capable of handling a wide variety of packages including SOIC, SSOP, TSOP, TSSOP, MSOP, QSOP and many other new leadless QFN packages.



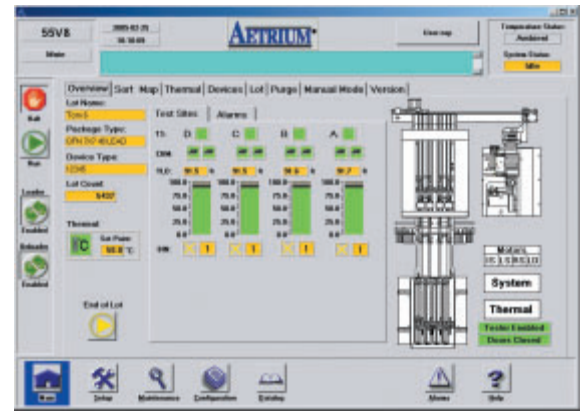
High speed rotating test site actuators (quad site configuration)

High Speed Indexing with Unique Rotating Test Site Actuators

- 24,000 uph (quad site) includes up to 350 ms of test time
- Dual, high-speed output sort shuttles
- Pin 1 rotation option
- 60mm test site pitch

Flexible Configuration

- Test Sites
 - Quad
 - Dual
 - Split Kit
- Temperatures
 - Ambient
 - Ambient-Hot (Cold ready)
 - Tri-Temp (Ambient, Hot, and Cold)
- Input / Output Media
 - Tube
 - Metal magazine/tray
- Any size test head
- SEMI-compliant GUI
- Touch-screen LCD monitor



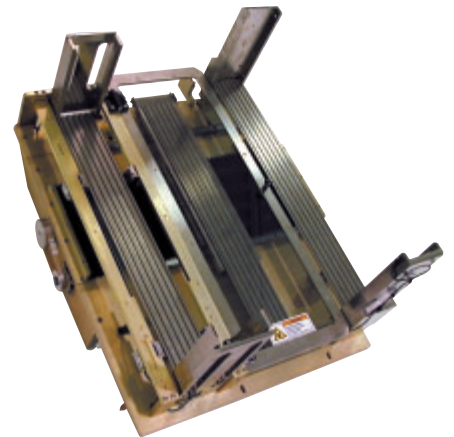
Touchscreen LCD Graphical User Interface

Device Handling

- Dual soak tracks per test site provide 2 minute soak time for most devices with no performance penalty
- Front-access Input Auto Loader
- Front-access Output Auto Unloader
- Floating lead backers
- Contacting
 - Kelvin
 - Standard (non-Kelvin)
 - Plunge-to-trace
 - Customer supplied
 - Third party
- Tool-less access portals for jam clearance
- Up to 8 programmable tube or magazine outputs



Metal Magazine Loader



Metal Magazine Unloader

Mechanical Refrigeration

- No LN2 tanks or plumbing required
- Detachable refrigeration unit supports multiple handlers



Detachable Mechanical Refrigeration

Model V8 Specifications

Applications

Package Types	QFN, SOIC, SSOP, TSSOP, MSOP, QSOP,
Package Sizes	QFN 3 mm to 10 mm SO .118" to .208"
Leads	8 to 28 leads 0.025" to 0.050" pitch 0.5mm to 1.27 mm pitch
Test Sites	Quad or dual
Package Conversion	4 hours typical

Environmental

Temperature Range	Ambient Ambient-Hot: ambient to +155°C Tri-Temp: -55°C to +155°C
Accuracy	±1°C at test site ±3°C in chamber
Heating	Chamber, with safety cutoff at 190°C
Cooling	Detachable mechanical refrigeration
Soak Time	Operator selectable, 0 to 999 seconds
Soak Capacity	40 inches per test site (1016 mm)

Contactors/Load Boards

Socket Type	Kelvin Standard (non-Kelvin) Plunge-to-trace Customer supplied Third party
Backplane	Vertical - 40" from centerline to floor (1016 mm)
Test Site Pitch	60mm

Input/Output

Input	- Tube Auto Loader: up to 80 tubes (3x3) - Magazine Auto Loader: up to 33 magazines
Output	- Tube Auto Unloader: up to 160 tubes 4 stacks of 7" each (178 mm) - Magazine Auto Unloader: up to 33 magazines - up to 8 programmable manual tube/magazine output bins per pair of test sites
Throughput	24,000 uph @ 350ms test time (quad-site)
Index Time	250 ms (EOT to SOT)

Tester Interface

Digital Interface	IEEE-488 GPIB, parallel, RS-232 serial
Test Modes	Parallel/synchronous Asynchronous

Controls

Display	Touch screen 15" LCD monitor
---------	------------------------------

Physical Dimensions

Weight	1350 lbs. (615 kg)
Height	78 inches (1980 mm)
Footprint	40.5" (1030 mm) x 38" (970 mm)

Utilities

Air Supply	80 PSIG dry filtered air, 14 SCFM
Electrical	230 Volts AC, single phase 50/60 Hz 1 Amp normal with 3 Amp surge 15 Amps at elevated temperature 30 Amps at tri-temp

All specifications subject to change without notice.



Aetrium Incorporated
2350 Helen Street
North St. Paul, MN 55109 USA
(651) 770-2000
Fax: (651) 770-7975
www.aetrium.com
e-mail: info@aetrium.com